



### Enterprise Data Manager

The Enterprise Data Manager (EDM) database structure allows tracking of a complete estimate revision history. Estimators have the option to apply alerts and memos to line items describing an assumption or a follow-up question for clarification. The entire estimate can be filtered to make a final review of the alerts. You can even choose to print item memos on all reports.

### Interface with On Center's On-Screen Takeoff

Many WinEst users also use On Center's On-Screen Takeoff for drawings. With a split-screen interface, the construction estimator can link the On-Screen quantification directly to the WinEst quantities and save the changes to the estimate. The built-in audit trail records the quantity source as On Center, so everyone knows the source. Additionally, new quantities can be updated quickly with a red and green color scheme in both the On Center screen and WinEst screens.

### Export to Primavera or MS Project for Scheduling

Each line item and assembly in WinEst can be assigned to a task/activity ID. This means you can see a preview of the costs for each task in the Task Table. By exporting the estimate to either Primavera or MS Project, you can quickly populate a construction schedule with resource names, predecessor names and all the cost- and resource-loaded tasks from the estimate.

### Creating What-If Scenarios

Owners appreciate seeing multiple what-if scenarios for their construction projects and how these extras might impact the budget. Creating a what-if scenario in WinEst is simple; all the user needs to do is create an alternate. An alternate is a line item or assembly that can be included in, or excluded from, the estimate with just one click. Examples of alternate options include landscaping, a surveillance system, a sound system or even a flagpole.

### Create Custom View and Filters

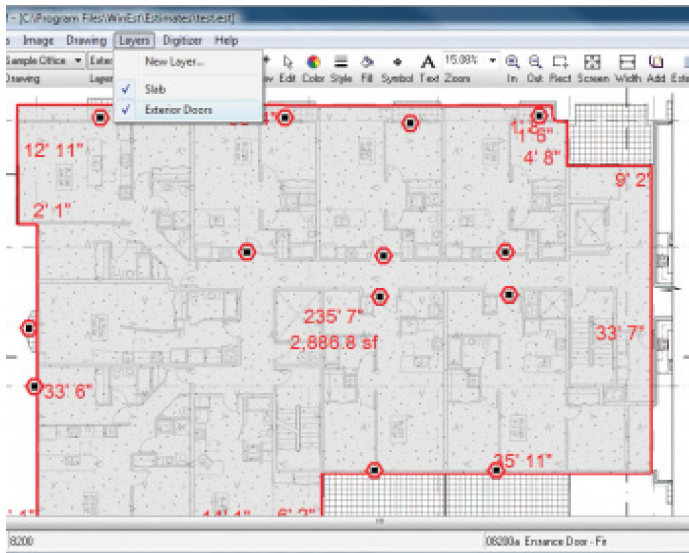
Create custom views and filters of the estimate, allowing you to view, edit, and report on the estimate in the way that is most familiar to you and your company. With WinEst you have unlimited grouping and sorting options, like CSI Masterformat, Uniformat, location, as well as sorting options to support the reporting requirements demanded by a specific owner.

### Filtering by Code Structure

Filters are a powerful way to organize a view of your estimating data. Construction firms have several methods to code their estimating data, either by CSI Masterformat or Uniformat. And WinEst provides two different filter views, so users can toggle between the two.

### Organizing Labor Rate Tables and Equipment Rate Tables

One of the challenges of honing-in on construction estimating accuracy is organizing rates for labor, crew and equipment. You can store corresponding rate tables which combine the base hourly and benefit rates to calculate the composite rate. For example, you might know the hourly rate for a forklift, but don't want to forget the cost of operating the forklift with oil, gas, and maintenance fees. Utilizing standardized tables for these rates takes the guesswork out of estimating for your team.



Contact your Distribution Partner today



**BuildingPoint Mid-America**  
 12125 Woodcrest Executive Drive, Suite 140  
 St. Louis, MO 63141  
 O: 314.682.1100  
 E: info@bpmidamerica.com  
 www.bpmidamerica.com